

Horizontal Ducted Units

Climatcool U.S.A.
Hi-Tech Airconditioning

Tropical Series



-  Timer
 -  Built-in Filter
 -  Wired Controller
 -  Auto Restart Function
 -  Built-in Drain Pump
 -  Wifi Control
- optional ■ standard

Indoor Mid ESP Duct

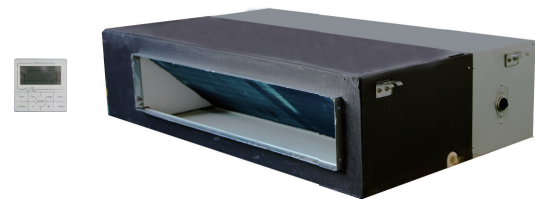
Fresh Air Intake >>

► Fresh air makes healthy, comfortable life.



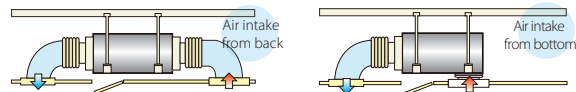
Wifi Control >>

► The optional WiFi modular makes it possible to monitor & control your AC while on the road through APP on your mobile phone or iPad.

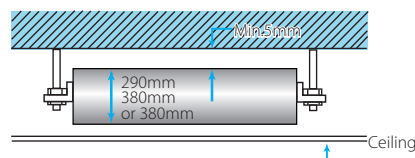


Flexibility >>

► To provide the flexibility to adapt to differing installation situations, the air inlet may be positioned either on the underside or the rear of the unit.



Compact Size >>

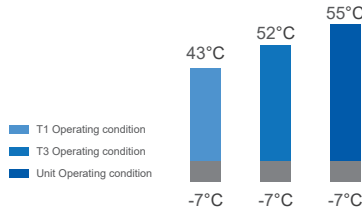


Horizontal Ducted Units

Outdoor Side Discharge

Up to 55°C Running >>

► Enjoy excellent performance even under ambient temperature up to 55°C, suitable for T3 operating condition.



Double Anti-Corrosion Technology >>

► Galvanized metal with world-class powder spraying technology can improved the anti-corrosion ability of the housing of outdoor units three times, especially in salty, moist surroundings.



Multiple Protection >>

► High Pressure protection, Low Pressure protection, Compressor overloading protection, High Ext. Temp. protection, Phase protection (Phase-loss, phase-reverse), Over-heating protection, anti-freezing protection, sensor failure alarm, failure code display and etc. The compressor could run reasonable operation range.



Specification



High Efficiency, R-410a

Unit Model	Indoor Outdoor	SATBT-18CN1-Q	SATBT-24CN1-Q	SATBT-30CN1-Q	SATBT-36CN1-Q	SATBT-48CN1-R	SATBT-60CN1-R	
		SAOUT-18CN1-Q	SAOUT-24CN1-Q	SAOUT-30CN1-Q	SAOUT-36CN1-Q	SAOUT-48CN1-R	SAOUT-60CN1-R	
Power Supply	V,HZ,Ph	220-240V/ 50Hz/ 1Ph				380-415V/ 50Hz/ 3Ph		
Cooling	Capacity (T1/T3)	Btu/h	17500/15200	23500/20500	28000/24500	34500/30500	48000 / 42000	52000/45500
		Kw	5.13/4.45	6.89/6.01	8.21/7.18	10.11/8.94	14.07/12.31	15.24/13.33
	Power Input (T1/T3)	Kw	1.48/1.78	1.96/2.35	2.4/2.9	2.88/3.50	4.00/4.80	4.40/5.23
	Current (T1/T3)	A	6.55/7.85	8.68/10.33	10.72/12.85	12.75/15.20	6.70/8.10	7.40/8.80
EER (T1/T3)	(Btu/H)/W	11.82/8.54	11.99/8.72	11.67/8.45	11.98/8.71	12.00/8.75	11.82/8.70	
Controller	Type	Wired Controller						
Indoor Unit	Air Flow (H/M/L)	m ³ /h	1000/800/700	1400/12500/1050	1650/1450/1250	2200/1850/1600	2600/2300/1950	3100/2600/2200
	Noise Level (H/M/L)	dB(A)	43/41/40	45/43/41	45/41/39	47/43/40	49/45/43	53/50/47
	ESP	Pa	0-60	0-60	0-80	0-80	0-100	0-150
	Net Dimension (WxHxD)	mm±5	890x290x705	890x290x705	1250x290x705	1250x290x705	1250x320x705	1400x380x790
	Packing Dimension	mm±5	1070x360x800	1070x360x800	1430x360x800	1430x360x800	1430x390x800	1580x450x880
	Weight (Net/ Gross)	Kg	32/35.5	33/36.5	44/50	44/50	47/53	51.5/58.5
	Drainage Pipe	mm	DN20(R3/4)					
Outdoor Unit	Compressor	Type	Rotary				Scroll	
	Refrigerant/ Flow Control	Type	R-410a / Outdoor Capillary Tube					
	Noise Level	dB(A)	56	56	58	58	60	60
	Net Dimension (WxHxD)	mm±5	800x545x315	900x700x350	900x700x350	970x805x395	940x1366x401	940x1366x401
	Packing Dimension	mm±5	920x620x400	1020x770x430	1020x770x430	1105x895x495	1180x1490x460	1180x1490x460
	Weight (Net/ Gross)	Kg	39/42	49/53	55/59	68/73	104/116	105/117
	Connection	Liquid	mm, in	6.35 (1/4)	9.52 (3/8)	9.52 (3/8)	9.52 (3/8)	9.52 (3/8)
Pipe Size	Gas	mm, in	12.7 (1/2)	15.88 (5/8)	15.88 (5/8)	15.88 (5/8)	19.05 (3/4)	19.05 (3/4)
Stuffing Quantity (20/40/40H)	Set	48/104/122	40/84/102	36/78/87	30/61/70	20/44/45	18/34/38	

Note:

- The Above design and specification are subject to change without prior notice.
- Cooling conditions; T1: Indoor air temp. 27°C DB/19°C WB, Outdoor air temp. 35°C Db.
T3: Indoor air temp. 27°C DB/19°C WB, Outdoor air temp. 46°C Db.