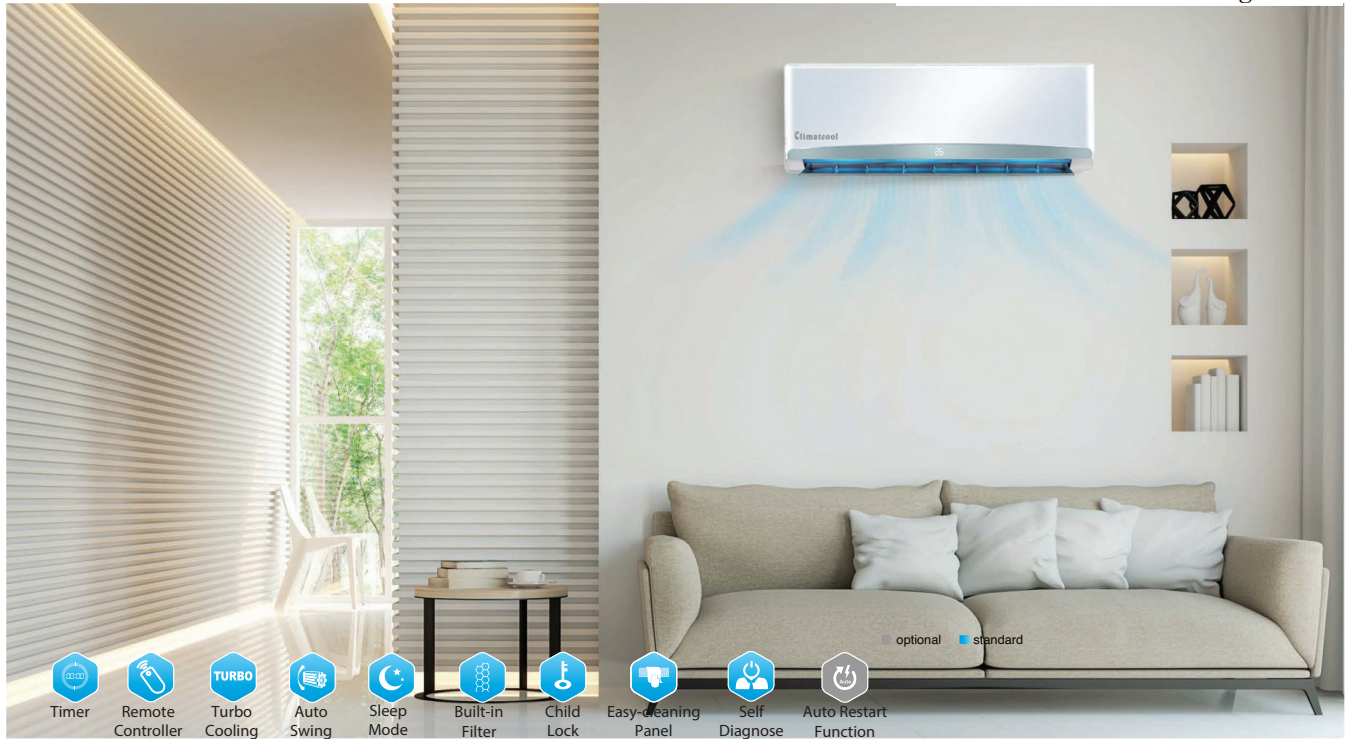


Wall Mounted Split Units

Climatcool U.S.A.
Hi-Tech Airconditioning



- Timer
- Remote Controller
- Turbo Cooling
- Auto Swing
- Sleep Mode
- Built-in Filter
- Child Lock
- Easy-Cleaning Panel
- Self Diagnose
- Auto Restart Function

optional standard

Indoor Decorative Unit

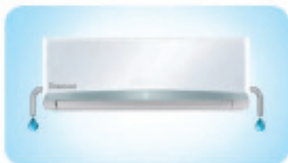
Fast Cooling >>

- ▶ The AC is operate in high-frequency when turning on which allow to reach the setting temperature quickly and achieve fast cooling at 30 seconds.



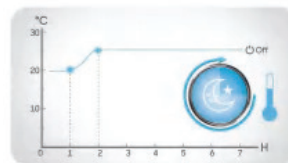
Two-way Draining Connection >>

- ▶ Both left and right of the indoor unit are possible for outstretch of connection piping and drainage hose, which enables easy installation.



Sleep Mode >>

- ▶ The AC will automatically increase cooling at 1°C per hour for the first 2 hours, then holds steady for the next 5 hours, after that it will switch off.



Wall Mounted Split Units

Outdoor Side Discharge

High-Quality Compressor >>

- Provides more stable power for reliable operation by adopting international famous brand high-quality compressors.



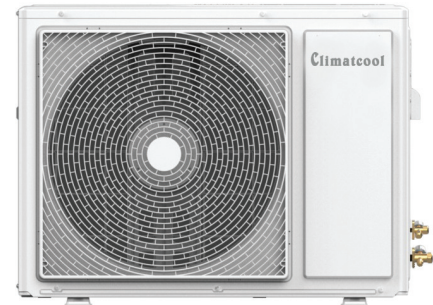
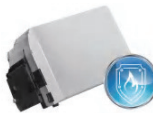
High-Quality Compressor >>

- Provide the timely self-protection for the compressor, electric control and motor in case of abnormal circumstances and faults.



Electrical Box >>

- The electrical box is made of 5VA fireproof materials, covered with fireproof sheet metal, and possessed with the optimized sealing performance. effectively preventing combustion and dust to ensure reliability and safety.



Chip >>

- Realize precise control and comprehensive protection by using industry-leading chips to ensure stable operation.



Specification



T3, High Efficiency, R-410a

Unit Model		Indoor Outdoor	SCW-12CRN1 SCC-12CN1	SCW-18CRN1 SCC-18CN1	SCW-24CRN1 SCC-24CN1	SCW-30CRN1 SCC-30CN1	SCW-36CRN1 SCC-36CN1
Power Supply		V,HZ,Ph	220-240V/ 50Hz/ 1Ph				
Cooling	Capacity (T1/T3)	Btu/h	10920 / 9220	18000 / 15200	22500 / 20000	26000 / 22000	29000 / 26000
		Kw	3.20 / 2.70	5.27 / 4.45	6.59 / 5.86	7.62 / 6.45	8.5 / 7.62
	Power Input (T1/T3)	Kw	0.95 / 1.11	1.52 / 1.83	1.91 / 2.30	2.20 / 2.64	2.46 / 2.92
	Current (T1/T3)	A	4.2 / 4.9	6.6 / 7.9	8.7 / 9.9	10.1 / 11.7	10.6 / 12.4
	EER (T1/T3)	(Btu/H)/W	11.5 / 8.31	11.8 / 8.32	11.8 / 8.7	11.82 / 8.32	11.8 / 8.9
Indoor Unit	Controller	Type	Remote Controller				
	Air Flow	m ³ /h	≥700	≥1000	≥1350	≥1350	≥1600
	Noise Level (H/M/L)	dB(A)	32-42	36-46	38-51	38-51	43-53
	Net Dimension (WxHxD)	mm±5	850x202x276	950x240x313	1155x240x313	1155x240x313	1460x274x344
	Packing Dimension	mm±5	930x305x366	1045x330x403	1248x328x400	1248x328x400	1598x365x443
	Weight (Net/ Gross)	Kg	13-Nov	14/17	17.5/20.5	17.5/20.5	24/27
Outdoor Unit	Compressor	Type	Rotary				
	Refrigerant/ Flow Control	Type	R-410a / Outdoor Capillary Tube				
	Net Dimension (WxHxD)	mm±5	812x540x256	880x650x330	910x699x340	970x790x370	970x790x370
	Packing Dimension	mm±5	920x595x335	1030x735x445	1060x790x459	1120x890x485	1120x890x485
	Weight (Net/ Gross)	Kg	34/38	46/52	52/58	69/74	73/82
	Connection	Liquid	mm, in	6.35 (1/4)	6.35 (1/4)	9.52 (3/8)	9.52 (3/8)
	Gas	mm, in	12.7 (1/2)	12.7 (1/2)	15.88 (5/8)	15.88 (5/8)	15.88 (5/8)
Stuffing Quantity (40'HQ)		Set	242	153	125	108	94

Note:

1. The Above design and specification are subject to change without prior notice.

2. Cooling conditions; T1: Indoor air temp. 27°C DB/19°C WB, Outdoor air temp. 35°C Db.

T3: Indoor air temp. 27°C DB/19°C WB, Outdoor air temp. 46°C Db.