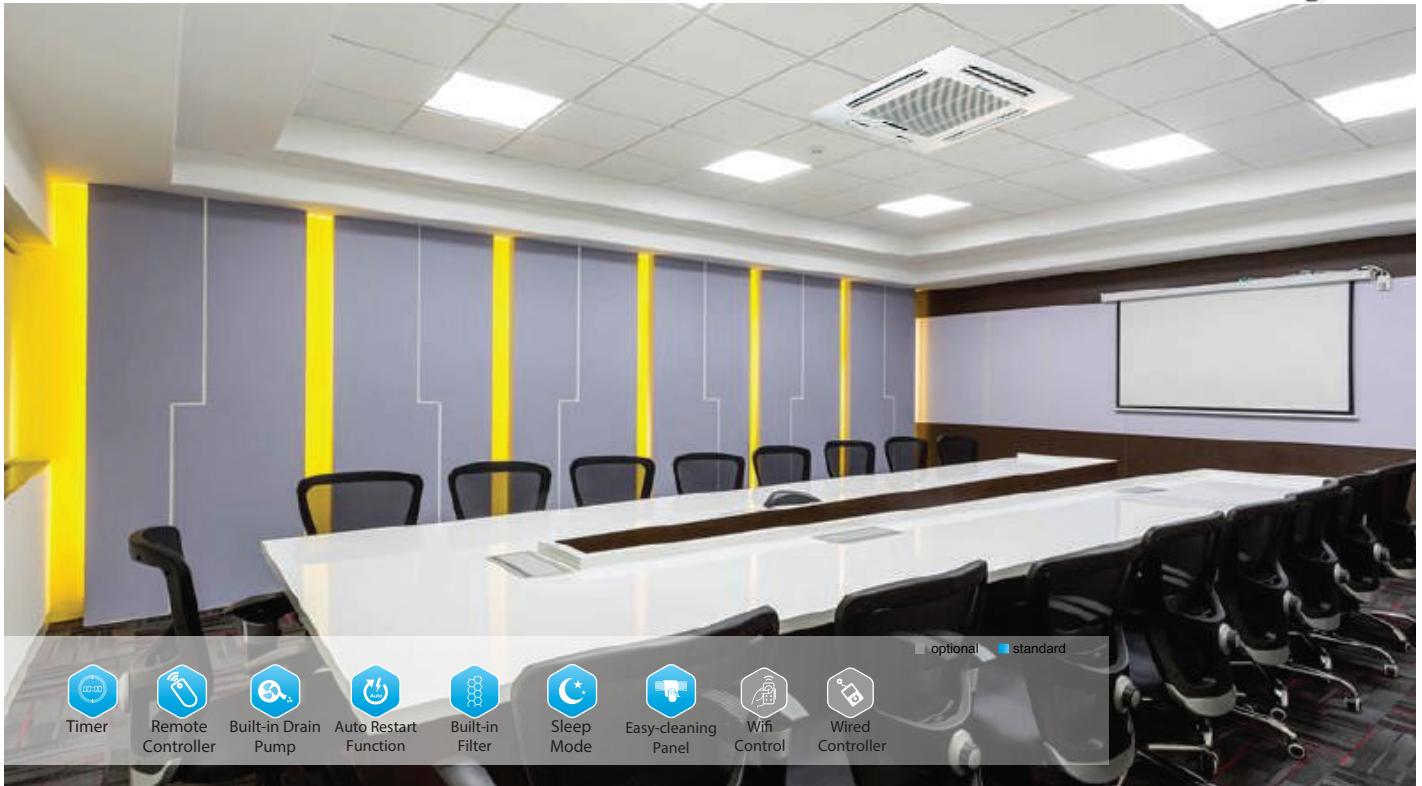


Standard Cassette Units

Climatcool U.S.A.
Hi-Tech Airconditioning



Timer



Remote Controller



Built-in Drain Pump



Auto Restart Function



Built-in Filter



Sleep Mode



Easy-cleaning Panel



Wifi Control



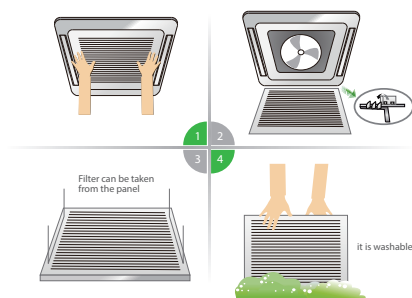
Wired Controller

optional standard

Indoor Cassette Unit

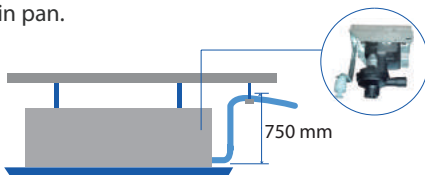
Filter >>

► Washable Filter, Convenient installation and maintenance



Built-in Drain Pump >>

► All units come with standard built-in drain pump that can lift drain water up to 750mm height from the drain pan.



Fire Resistance Elec. Box >>

► Fire resistance design box to enhance elec. safety with maintenance friendly & the E-Box is Galvanized Steel built in body.

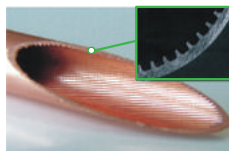


Standard Cassette Units

Outdoor Side Discharge

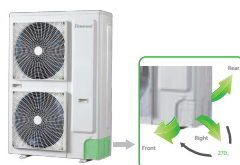
Fins & Coil >>

► Provide hydrophilic aluminum foil and inner grooved copper pipe to enhance the heat exchange performance.



Convenient Installation >>

► Multi-direction piping connection meets different requirements & convenient installation.



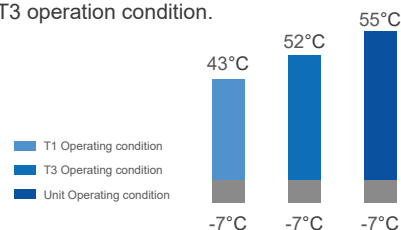
Easy Maintenance >>

► External globe valve and wiring port to make it easier for installation & maintenance.



Up to 55°C Running >>

► Enjoy excellent performance even under ambient temperature up to 55°C, suitable for T3 operation condition.



Specification



T3, Std. Efficiency, R-410a

Unit Model	Indoor Outdoor	SCCBT-18CRN1	SCCAT-24CRN1	SCCAT-30CRN1	SCCAT-36CRN1	SCCAT-48CRN1	SCCAT-60CRN1		
		SCOUT-18CN1	SCOUT-24CN1	SCOUT-30CN1	SCOUT-36CN1	SCOUT-48CN1	SCOUT-60CN1		
Power Supply	V,Hz,Ph	220-240V/ 50Hz/ 1Ph				380-415V/ 50Hz/ 3Ph			
Cooling	Capacity (T1/T3)	Btu/h	17500 / 15000	24000 / 21000	3000 / 27000	36000 / 32000	48000 / 42500	58000 / 51500	
		Kw	5.1 / 4.4	7.03 / 6.15	8.79 / 7.91	10.55 / 9.3	14.0 / 12.45	17.0 / 15.05	
	Power Input (T1/T3)	Kw	1.77 / 2.05	2.54 / 2.68	3.13 / 3.59	3.7 / 4.46	4.75 / 5.5	5.95 / 6.55	
	Current (T1/T3)	A	8.5 / 9.5	11.3 / 11.7	13.9 / 15.9	16.5 / 19.7	9.5 / 10.2	11.9 / 12.8	
EER (T1/T3)	(Btu/H)/W	9.61 / 7.32	9.56 / 7.85	9.59 / 7.52	9.73 / 7.17	10.1 / 7.75	9.75 / 7.85		
Indoor Unit	Controller	Type	Wireless Remote (Wired Controller - Optional)						
	Air Flow (H/M/L)	m ³ /h	800/650/450	1300/1100/850	1300/1100/850	1700/1500/1300	2000/1650/1400	2000/1650/1400	
	Noise Level (H/M/L)	dB(A)	48/42/36	50/47/44	50/47/44	54/48/44	54/48/44	54/48/44	
	ESP	Pa	-	-	-	-	-	-	
	Net Dimension (WxHxD)	mm±5	580x260x580	840x230x840	840x230x840	840x230x840	840x230x840	840x230x840	
	Packing Dimension	mm±5	755x680x375	920x265x920	920x265x920	920x265x920	920x265x920	920x265x920	
	Weight (Net/ Gross)	Kg	16.5 / 22	24 / 29	24 / 29	28 / 33.5	31 / 35	31 / 35	
	Drainage Pipe	mm	25	25	25	25	25	25	
Panel	Net (Panel)	mm±5	650x40x650	950x50x950	950x50x950	950x50x950	950x50x950	950x50x950	
	Packing (Panel)	mm±5	750x95x750	1030x105x1030	1030x105x1030	1030x105x1030	1030x105x1030	1030x105x1030	
	Net/Gross (Panel)	Kg	2.7 / 4.0	5.4 / 8	5.4 / 8.0	5.4 / 8.0	5.4 / 8	5.4 / 8.0	
Outdoor Unit	Compressor	Type	Rotary						
	Refrigerant/ Flow Control	Type	R-410a / Outdoor Capillary Tube						
	Noise Level	dB(A)	55	57	58	60	60	60	
	Net Dimension (WxHxD)	mm±5	850x555x345	914x702x382	914x702x382	1015x810x445	911x1330x400	911x1330x400	
	Packing Dimension	mm±5	915x600x380	975x770x420	975x770x420	1075x875x495	965x1445x405	965x1445x405	
	Weight (Net/ Gross)	Kg	41.5 / 45	50 / 53	56 / 59	63 / 68	96 / 106	96 / 106	
	Connection	Liquid	mm, in	6.35 (1/4)	9.52 (3/8)	9.52 (3/8)	9.52 (3/8)	9.52 (3/8)	9.52 (3/8)
Pipe Size	Gas	mm, in	12.7 (1/2)	15.88 (5/8)	15.88 (5/8)	19.05 (3/4)	19.05 (3/4)	19.05 (3/4)	
Stuffing Quantity (20/40/40H)	Set		43/89/103	43/89/103	43/89/103	43/89/103	27/72/80	25/55/64	

Note:

- The Above design and specification are subject to change without prior notice.
- Cooling conditions; T1: Indoor air temp. 27°C DB/19°C WB, Outdoor air temp. 35°C Db.
T3: Indoor air temp. 27°C DB/19°C WB, Outdoor air temp. 46°C Db.